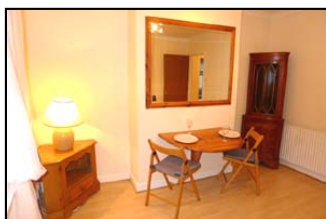
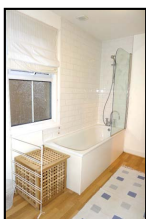
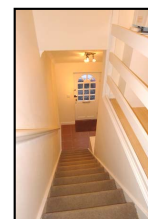


**203a Chase Side , North London EN20QZ (Unsold/Available) £195.00
Per week**



Price	£195.00 Per week
Total rooms	2
Bathrooms	1
Parking	1
Floors	1

Chase Side, Gordon Hill, Enfield, EN2

A really well laid-out, bright and sunny 1st floor apartment, in the sought after area of Chase Side, Gordon Hill.

Supplied part furnished (no bedroom furniture supplied), off street parking. patio garden to rear

Own entrance to property, Gas fired central heating, decorated to a good clean standard thru-out

Approx. 8-10 mins walk to Gordon Hill Station (zone 5), on route to bus services for Enfield station and Shopping Center.

Suitable for single or couples, though no pets or children,

BBQ area, Central heating, Close to shops, Close to schools



Mother Residential Limited
(Owner/Seller)

Mother Residential Limited
Phone: 0207 240 7000