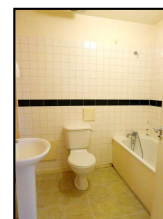
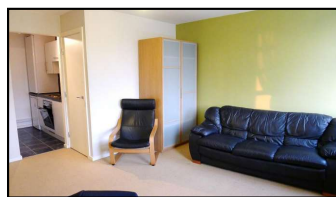


## One bedroom apartment at The Lumiere Building

Mother Residential Limited - Mother Residential Limited

---

### One bedroom apartment at The Lumiere Building (Unsold/Available) £190.00 Per week



Price	£190.00 Per week
Total rooms	2
Bathrooms	1
Parking	1
Floors	1
Age of property	12

The Lumiere Building, Romford Road, E7 8AY

An excellent, well laid out and comfortable, furnished, one bedroom furnished apartment within this very popular building.

Unoverlooked, with views towards the City and West End.

## One bedroom apartment at The Lumiere Building

Mother Residential Limited - Mother Residential Limited

---

Daytime concierge,

Secure parking space and water bills included.

Tesco Metro next door,

All transport links to and from London, building is close to Manor Park station (zone 3) for train services to Liverpool Street , and next door to Woodgrange Park Station for services towards North London. Both day and night bus services stopping outside the building

Central heating, Close to shops, Close to schools, Elevator



Mother Residential Limited  
(Owner/Seller)

Mother Residential Limited  
Phone: 0207 240 7000